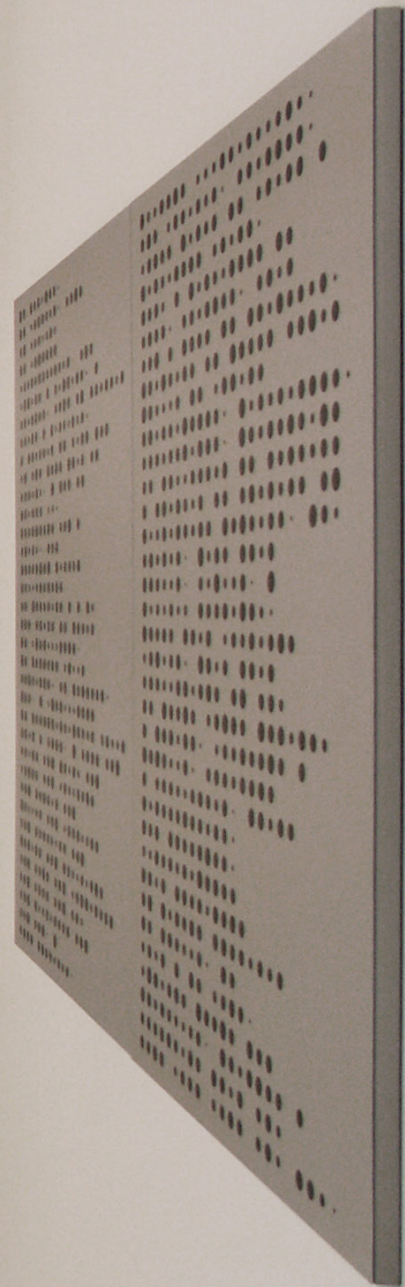
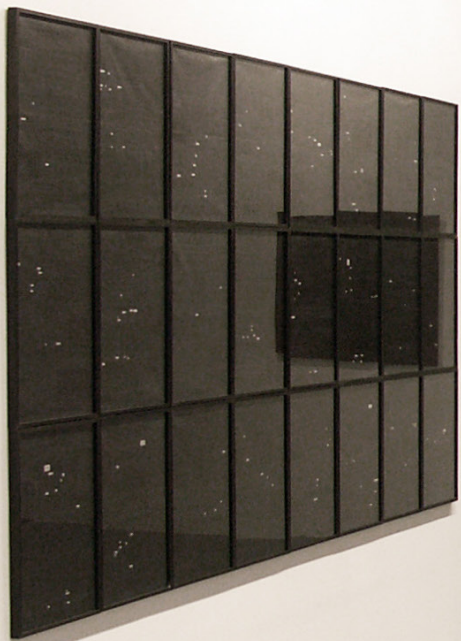
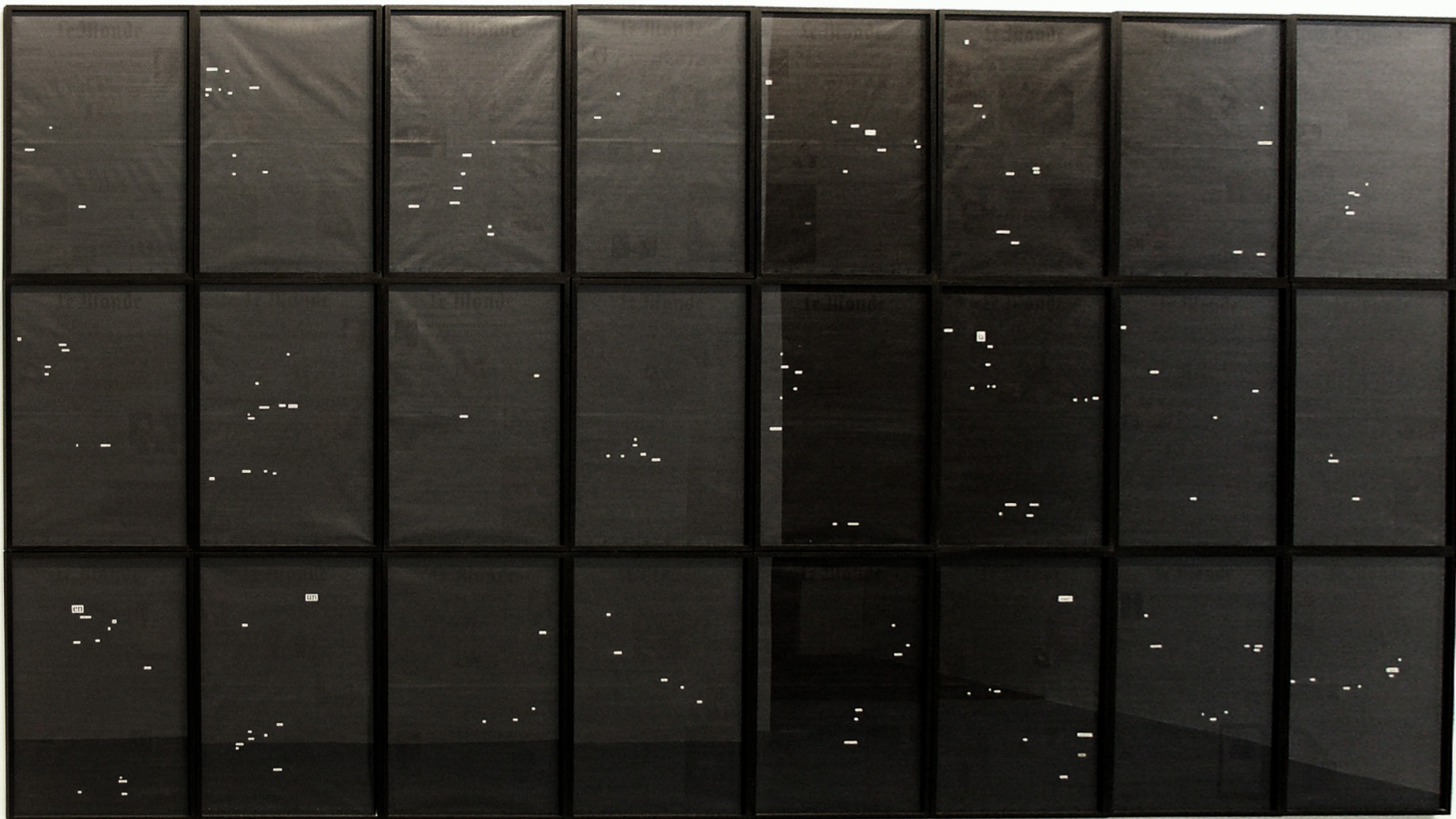


**ABOUT TO SAY**  
**GALERIE**  
**MARTINE**  
**ABOUCAYA**  
**PARIS**  
**2005**

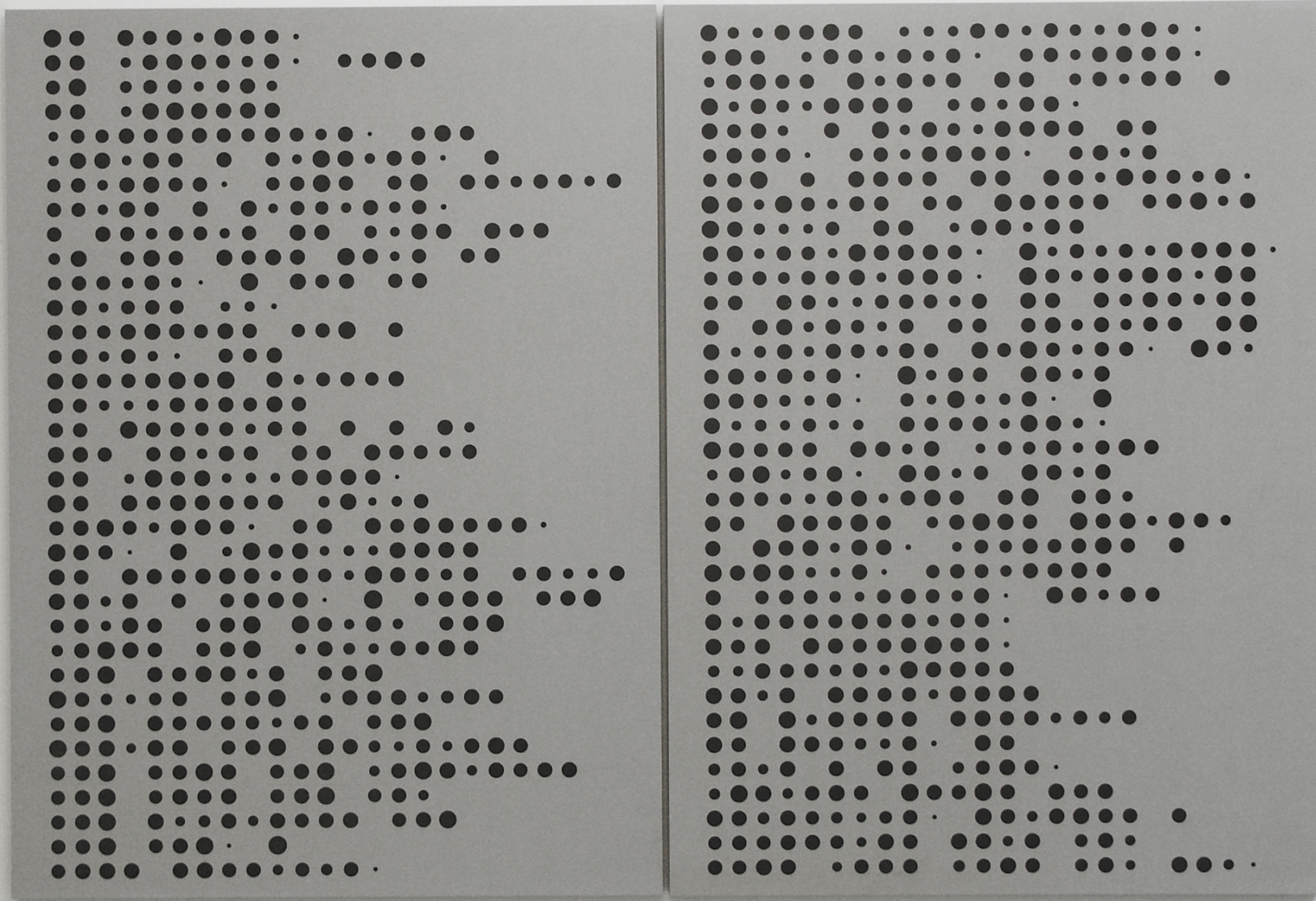


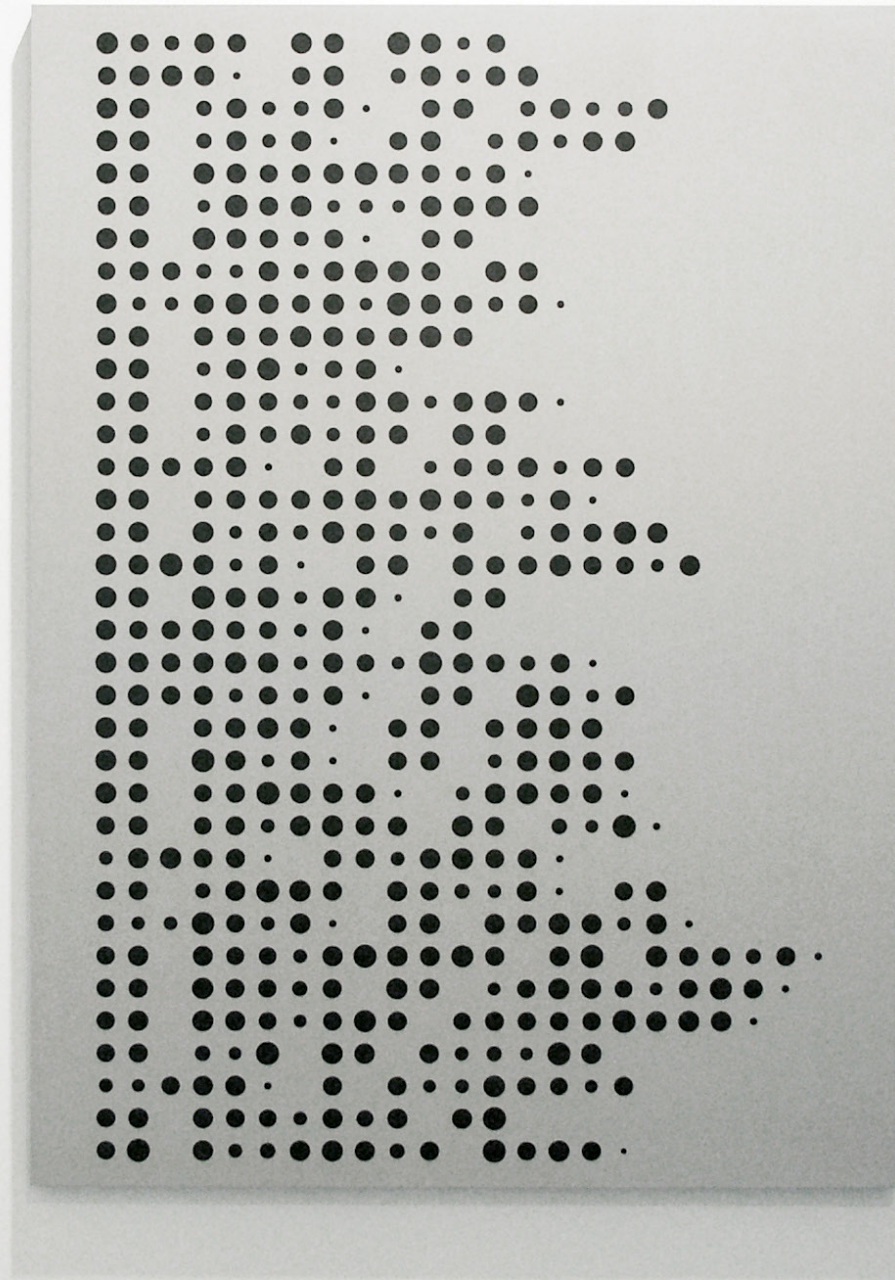
ANGELA  
DETANICO  
RAFAEL  
LAIN





LE JOURNAL DECOUVERT 2005 Felt newspaper

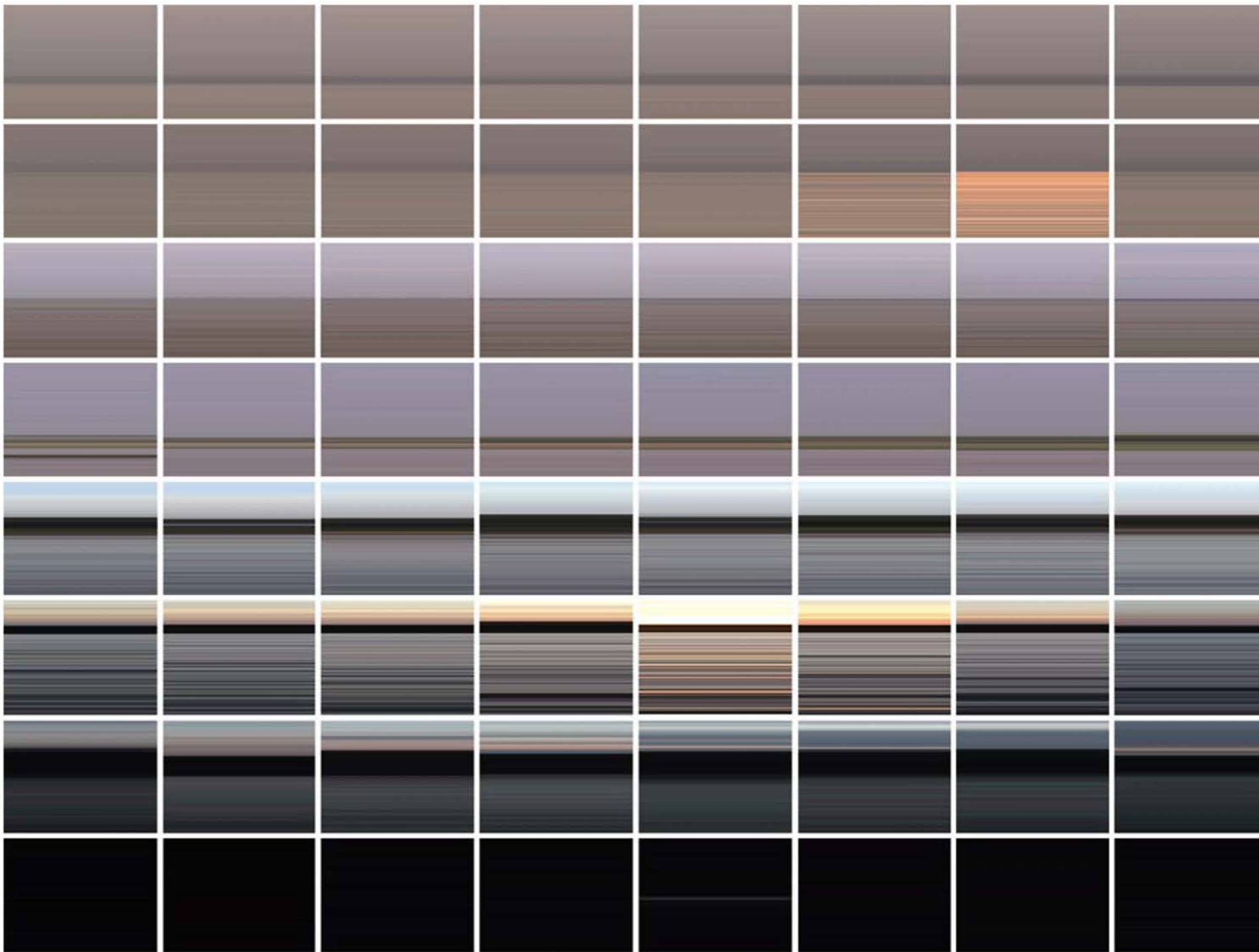




UNTITLED (3) 2005 Offset printing plates 60 x 80

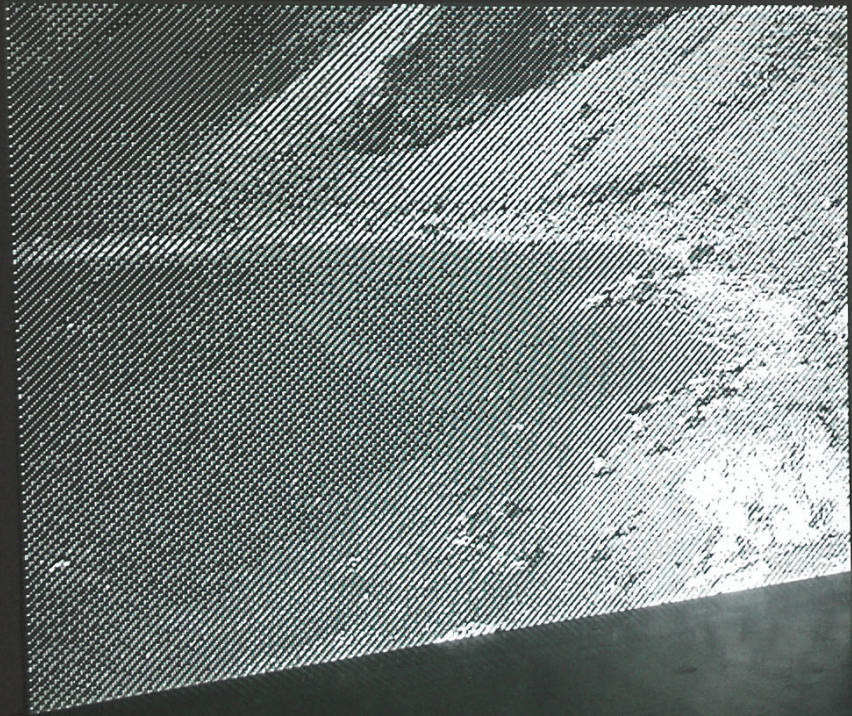
Texts written with Helvetica Concentrated





**FLATLAND**  
2003 Video,  
color, sound  
7 min 36 sec

Going down  
Mekong river delta.  
the landscape reveals  
itself in a flow of  
pictures.  
The river following  
its way to the sea.  
The geography  
softened by the  
water.  
The river banks laying  
down the world in an  
endless horizon.  
Here is the flatland.  
time seems blown  
in the horizontality  
of a space long  
enough to extend the  
present in a sequence  
of moments.  
We almost  
recognize it but  
we are traveling  
too fast (or maybe  
not moving at all).  
The soundwaves from  
the radio  
can't reach us.  
We can't  
understand  
what they say.  
We are not from here.  
We pass  
trough as  
the water.





2005